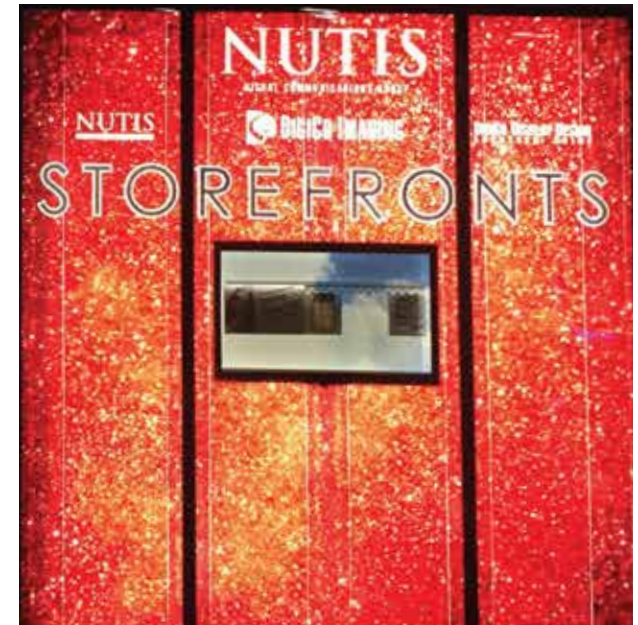


HIGH RESOLUTION 1080P - WHITE=CLEAR

The unique display features of the transparent LCD screen showcase the product THROUGH the video playing in front of it.

With better color resolution, wider viewing angles and a high reliability, the transparent LCD screen with it's pure flat panel and ultra thin design will optimize and increase the amount of attention to your product!

Uses include:
Storefront product displays
Table tops / counters
Free-standing displays
Showcases



For more detailed product information, please contact Nutis Visual Communications Group at (800) 848-6266.

TRANSPARENT LCD SCREEN SPECS

Item	Frame Material	Description & Specification	Type	Viewable Area Size
DIG1201	acrylic	12 inch transparent LCD panel With remote control. Active Area: 246*184.5mm	Motherboard with HDMI+USB interface +SD card	9.75" x 7.25"
DIG1401	acrylic	14 inch transparent LCD panel With remote control. Active Area: 310*174mm	Motherboard with HDMI+USB interface +SD card	12.25" x 6.75"
DIG1701	acrylic	17 inch transparent LCD panel With remote control. Active Area: 381*214mm	Motherboard with HDMI+USB interface +SD card	15" x 8.5"
DIG1901	acrylic	19 inch transparent LCD panel With remote control. Active Area: 410*230mm	Motherboard with HDMI+USB interface +SD card	16" x 9"
DIG2201	acrylic	22 inch transparent LCD panel With remote control. Active Area: 475.2*267.3mm	Motherboard with HDMI+USB interface +SD card	18.75" x 10.5"
DIG2601	acrylic	26 inch transparent LCD panel With remote control. Active Area: 575*323mm	Motherboard with HDMI+USB interface +SD card	22.5" x 12.75"

Item	Frame Material	Description & Specification	Type	Viewable Area Size
DIG3201	acrylic	32 inch transparent LCD panel With remote control. Active Area: 697*392mm	Motherboard with HDMI+USB interface +SD card	27.5" x 15.5"
DIG3701	acrylic	37 inch transparent LCD panel With remote control. Active Area: 819*459mm	Motherboard with HDMI+USB interface +SD card	32.25" x 18"
DIG4301	Metal sheet	42 inch transparent LCD panel With remote control. Active Area: 941*530mm	Motherboard with HDMI+USB interface +SD card	37" x 21"
DIG4701	Metal sheet	47 inch transparent LCD panel With remote control. Active Area: 1040*584mm	Motherboard with HDMI+USB interface +SD card	41" x 23"
DIG5501	Metal sheet	55 inch transparent LCD panel With remote control. Active Area: 1069*680mm	Motherboard with HDMI+USB interface +SD card	42" x 26.75"
DIG6501	Metal sheet	65 inch transparent LCD panel With remote control. Active Area: 1428*803mm	Motherboard with HDMI+USB interface +SD card	56" x 31.5"

For more detailed product information, please contact The Nutis Visual Communications Group at (800) 848-6266.